

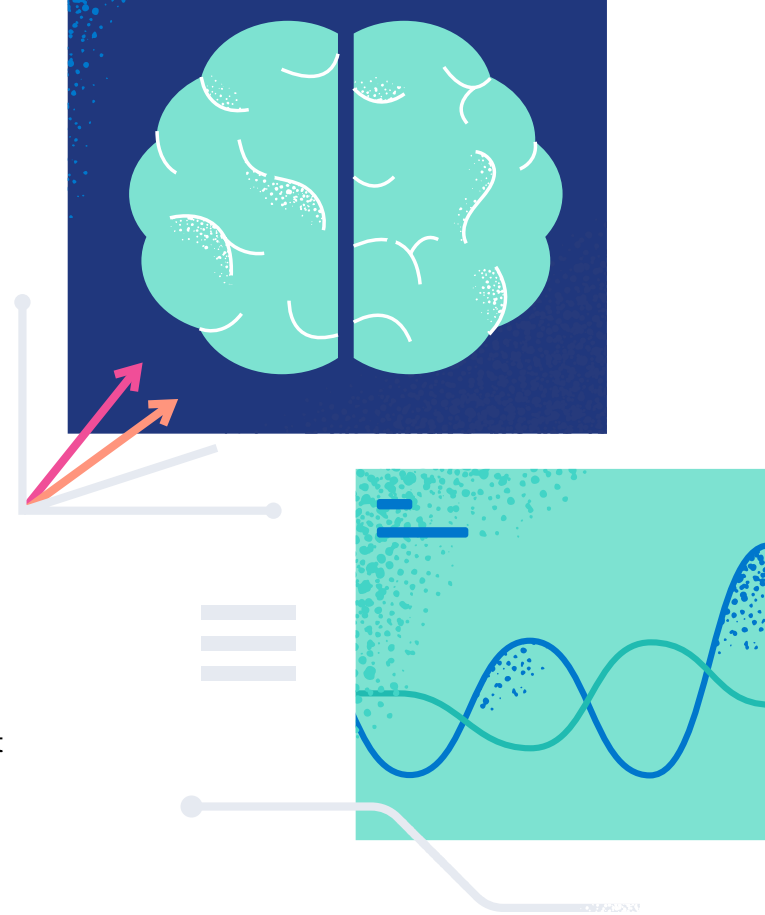


ELASTIC AI ASSISTANT:

Faster problem resolution with generative AI

A generative AI experience that's tailored to your team's observability and security needs. The Elastic AI Assistant delivers accurate and context-aware insights that drive a paradigm shift from siloed searches across multiple data sets to an interactive chat.

The result: zero in on the most relevant information, faster.



From knowledge silos to chat-based interactivity



IDC sees real potential in the Elastic AI Assistant and expanding its capabilities beyond IT and cybersecurity can only add to Elastic customer satisfaction.

IDC Market Perspective¹

Elasticsearch Relevance Engine (ESRE™) connects your private data, whether it's business or operational, a knowledge base, runbook or case history, to large language models (LLMs) with the Elastic AI Assistant.



Lean into the power of generative AI

Securely link your proprietary data with large language models (LLMs) using ESRE™

Generate output you can trust that's up-to-date, accurate, relevant, and business specific.



Turn observability insights into actions

Combine with machine learning to proactively identify issues and surface potential root causes.

Interpret log messages and errors, write reports, and identify and execute a runbook.



Bolster your security operations

Interact with Elastic Security for tasks such as alert investigation, incident response, and query generation or conversion.

Make it seamless with prebuilt prompts — one click and you're done — or add your own prompts.

Learn more about Elastic's capabilities, use cases, and customers at elastic.co.

[Download the IDC Market Insights Perspective on the Elastic AI Assistant](#)